

## Musiland Monitor 01 US (D)

Thank you for purchasing the Musiland USB Audio device. In order to get you up and running as quickly as possible, please read through this document to make sure you get it set up correctly. This will ensure that the unit will operate at the high level of performance the device is capable of.

*Gert Byleveldt 17/05/2011*

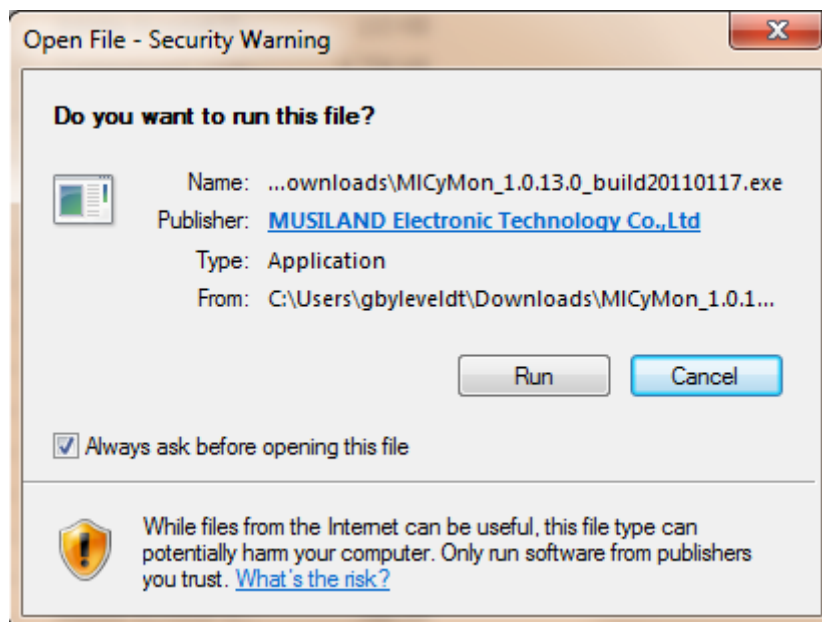
**Do not connect the USB device until the software has been correctly installed!** The USB device makes use of proprietary drivers not available by default with Windows. It is important for these drivers to be installed for Windows to detect it properly.

### 1) Installing the Drivers

This installation assumes a fresh install of the product. Should you have a previous version of the software installed, it's important to first uninstall this and reboot the machine before a new installation is done.

Install the MICyMon\_XXXXXX driver, located on the supplied CD, by double clicking on it. (At the time of this writing, the latest driver is 1.0.13.0 build 2011/01/17)

Depending on your security settings, you may be prompted that opening files like these can be a security risk. This is a generic warning given when any application is opened in Windows. StudioB has gone to great lengths to ensure that all files supplied are virus free, it is thus safe to open this file by clicking on the 'Run' button.



**Fig 01**

When prompted, click 'Next' to start the installation

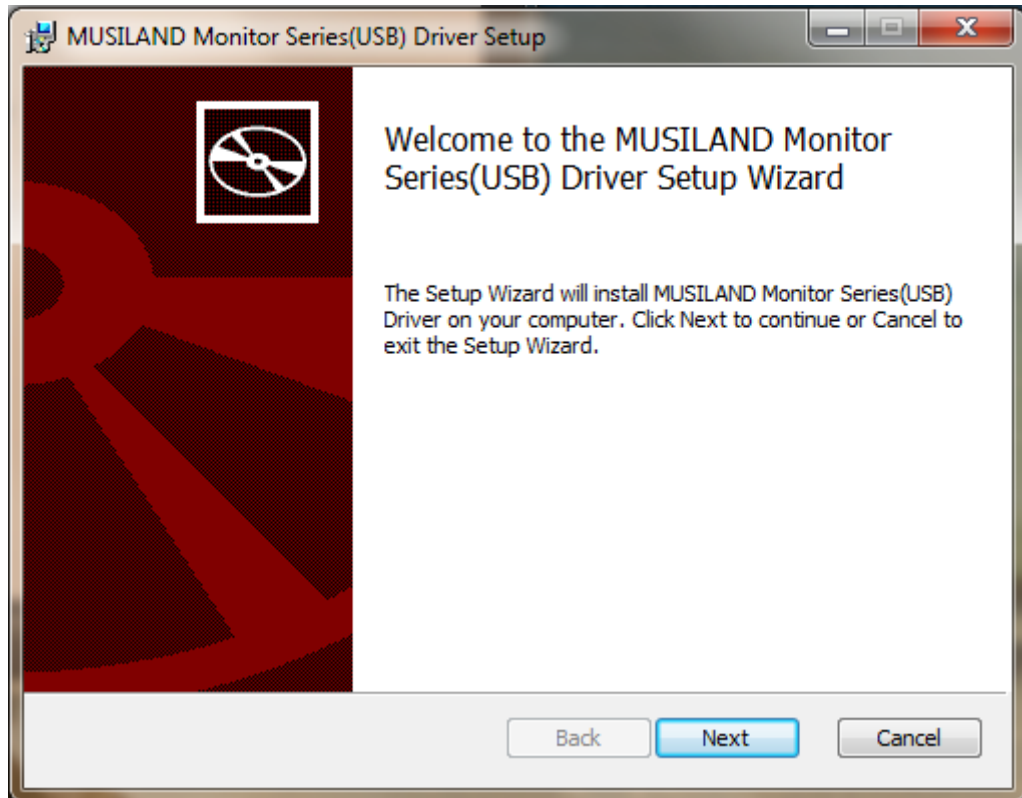


Fig 02

Click the 'Install' button

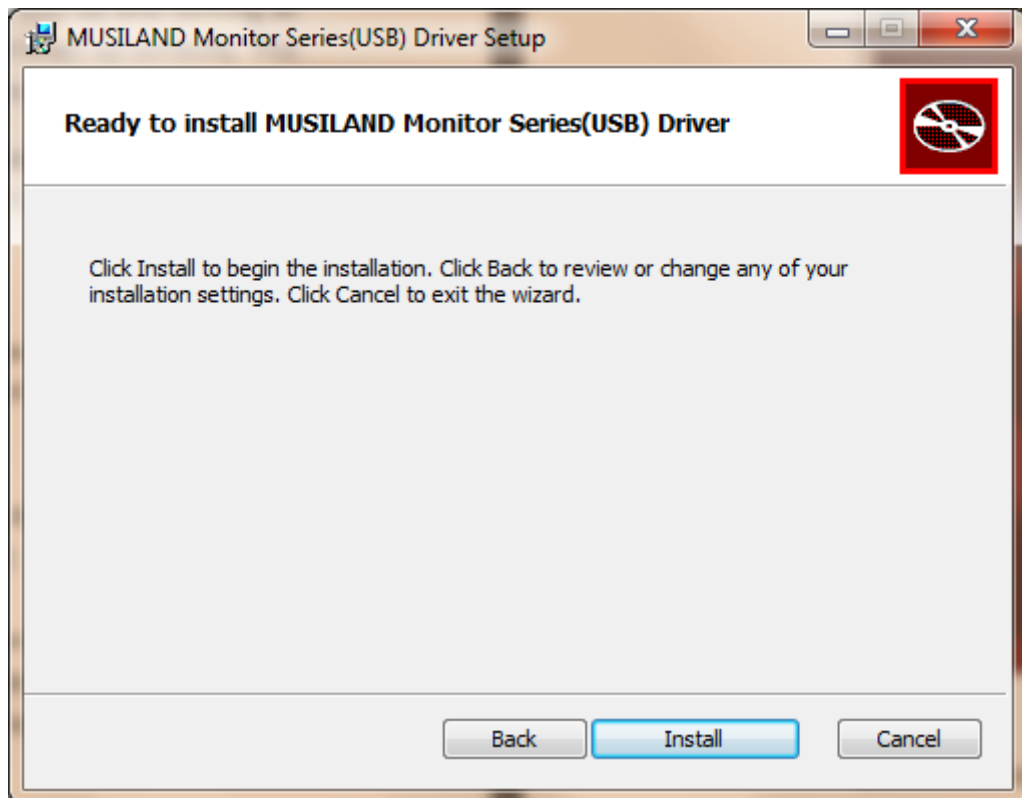


Fig 03

When prompted by Windows Security to verify the installation of the Device Software, click on the 'Install' button

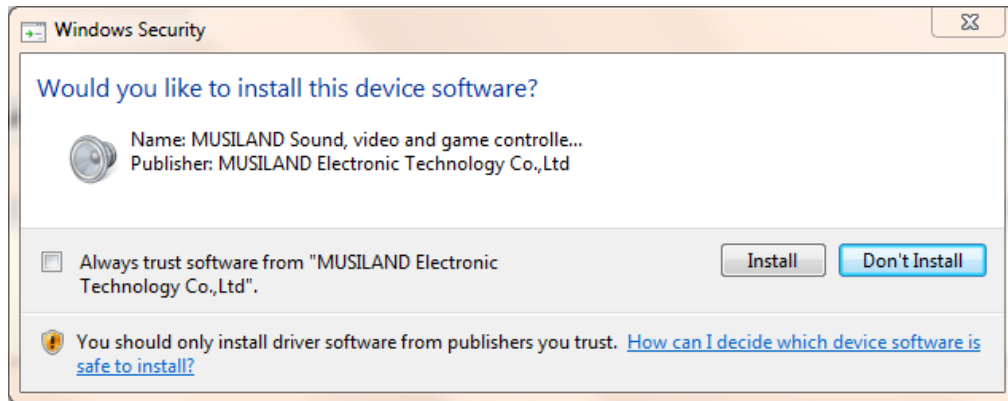


Fig 04

This same message may appear up to 4 times as the various drivers are installed. Simply continue clicking the 'Install' button until the installation completes.

When prompted to do so, close the installation by clicking 'Finish' and reboot your computer.

## 2) Connecting your USB device

Once done with the previous step, connect your USB device with the supplied USB 'A' to USB 'B' cable. Once the device is recognised by Windows the installation of the drivers will commence. Upon completion, the Musiland 'M' will appear in the system tray



Fig 05

Double click on this icon to open the Musiland Control Panel and make sure it appears as below to verify the installation was a success

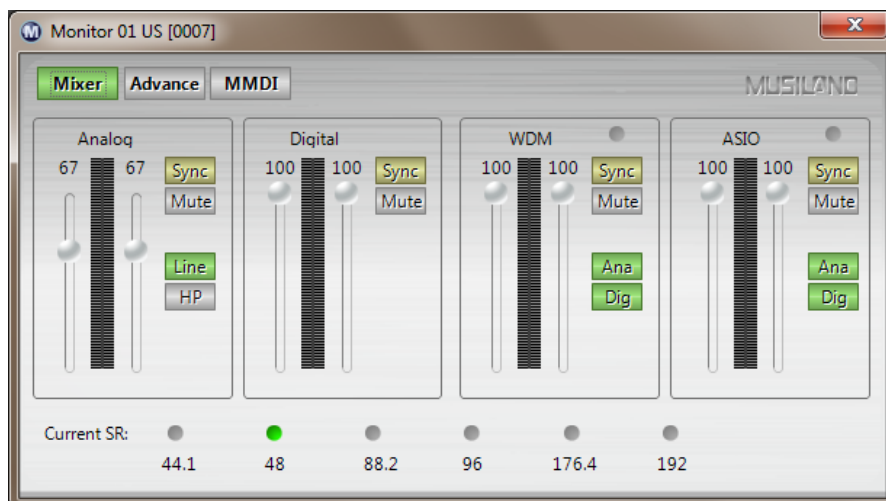
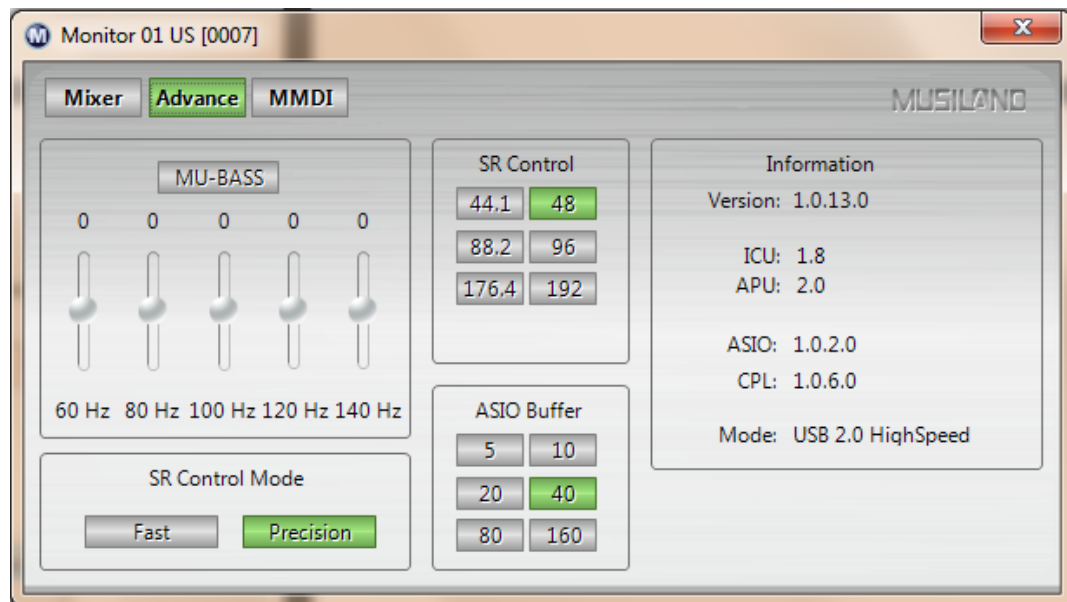


Fig 06

### 3) Configuring the driver

Once the previous step is completed successfully (and with the Musiland Monitor control panel still open), click on the 'Advance' button.



**Fig 07**

For best performance, it is recommended to always run the USB device in 'Precision' mode. This option does cause some delay when playing tracks, but it guarantees the best internal clock accuracy.

The 'SR Control' (Sample Rate) options can be changed to suit your preference. This is an option to change the output setting of the internal Sample Rate Converter.

### 4) Using Foobar as your Audio Player

It is strongly recommended to use Foobar as your media player for best device performance. This player is free (and included in the driver disk) and supports many plugins and enhancements. One of the specific enhancements is the support of ASIO via a plugin. This by-passes the Windows audio functionality and ensures bit perfect delivery of audio, from the source to the DAC.

Install the foobar2000\_xxxx program located on the driver disk. (At the time of this writing, the latest stable version is 1.1.6)

Should you be prompted with a security warning, you can safely click the 'Run' button to start the installation.

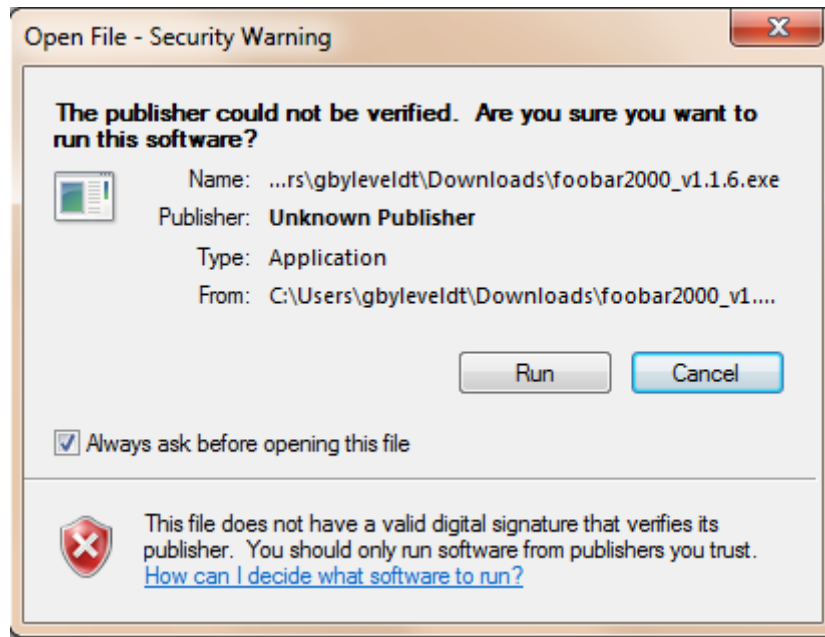


Fig 08

Start the installation by clicking the 'Next' button



Fig 09

Should you agree with the Term of Use, click the 'I Agree' button



Fig 10

For our purposes, select the 'Standard Installation' and click on 'Next'

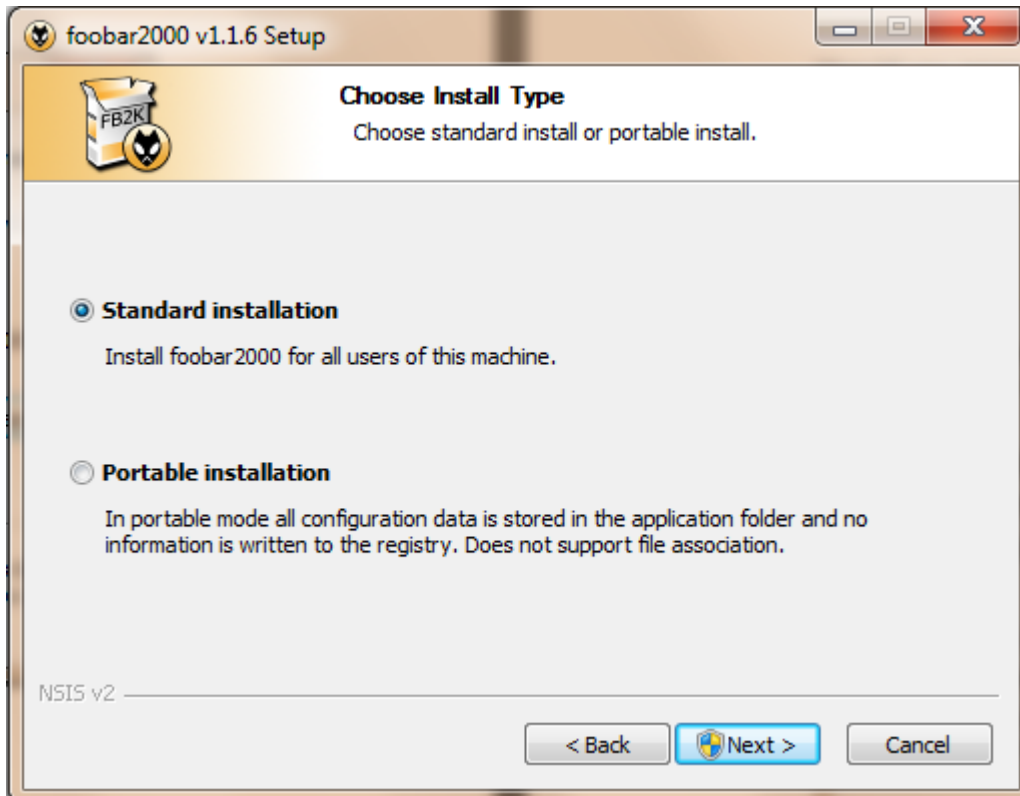


Fig 11

It is recommended to use the default suggested installation path and click 'Next'

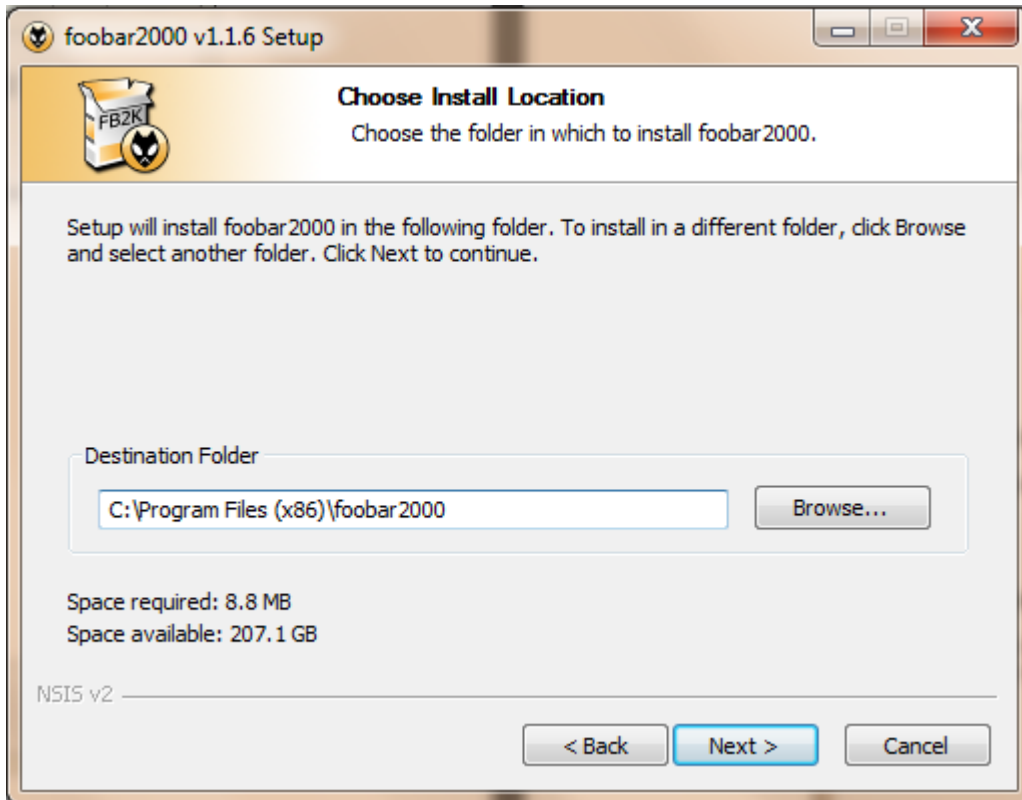


Fig 12

At the next screen, leave all the settings at default and click 'Next'

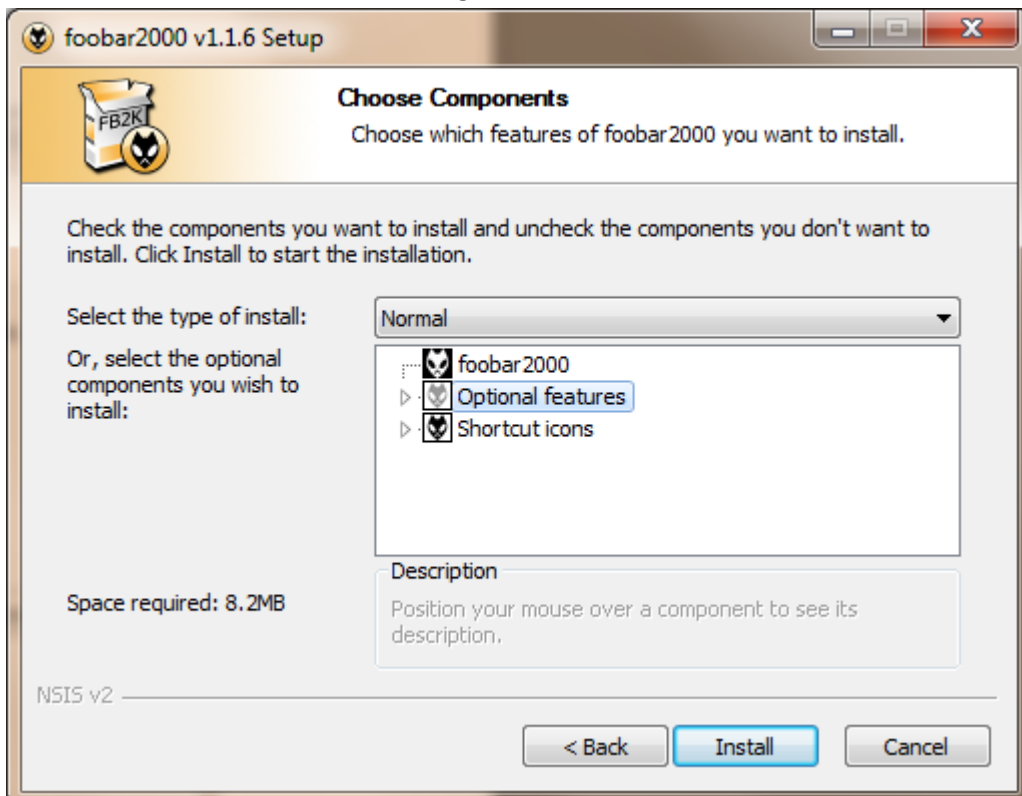


Fig 13

When the installation is complete, click on the 'Finish' button

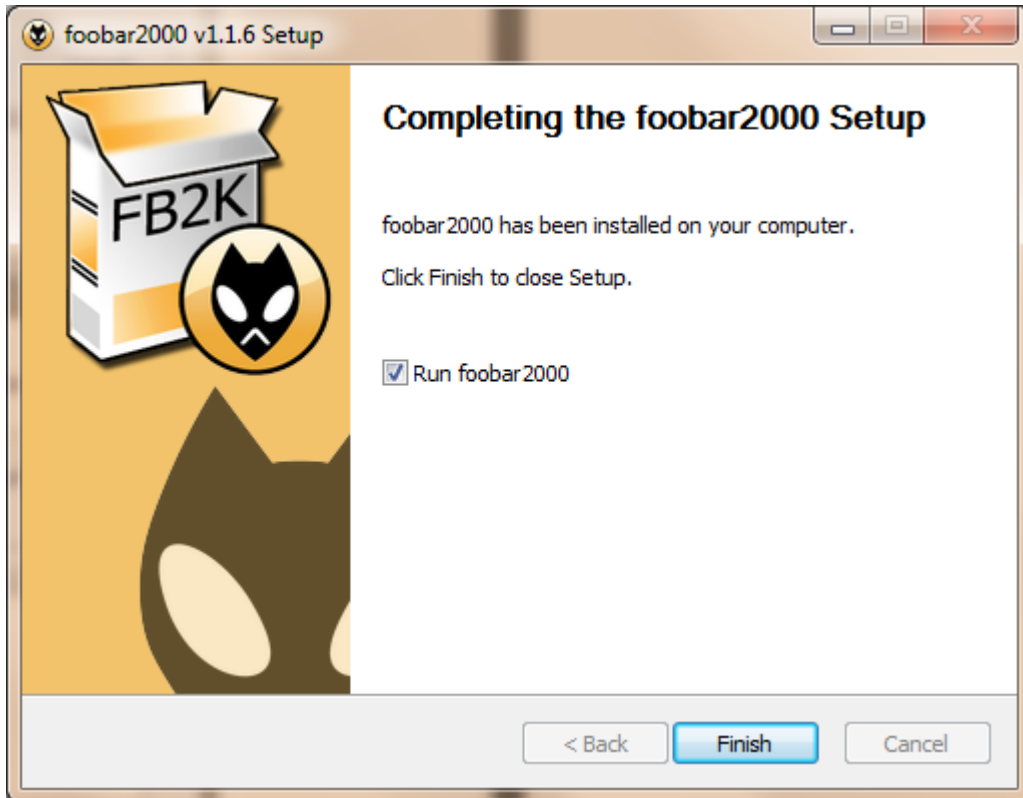


Fig 14

Once you've completed the installation, Foobar will open and will prompt you for your preferences. I've shown the settings I prefer, but feel free to change it to your own preferences

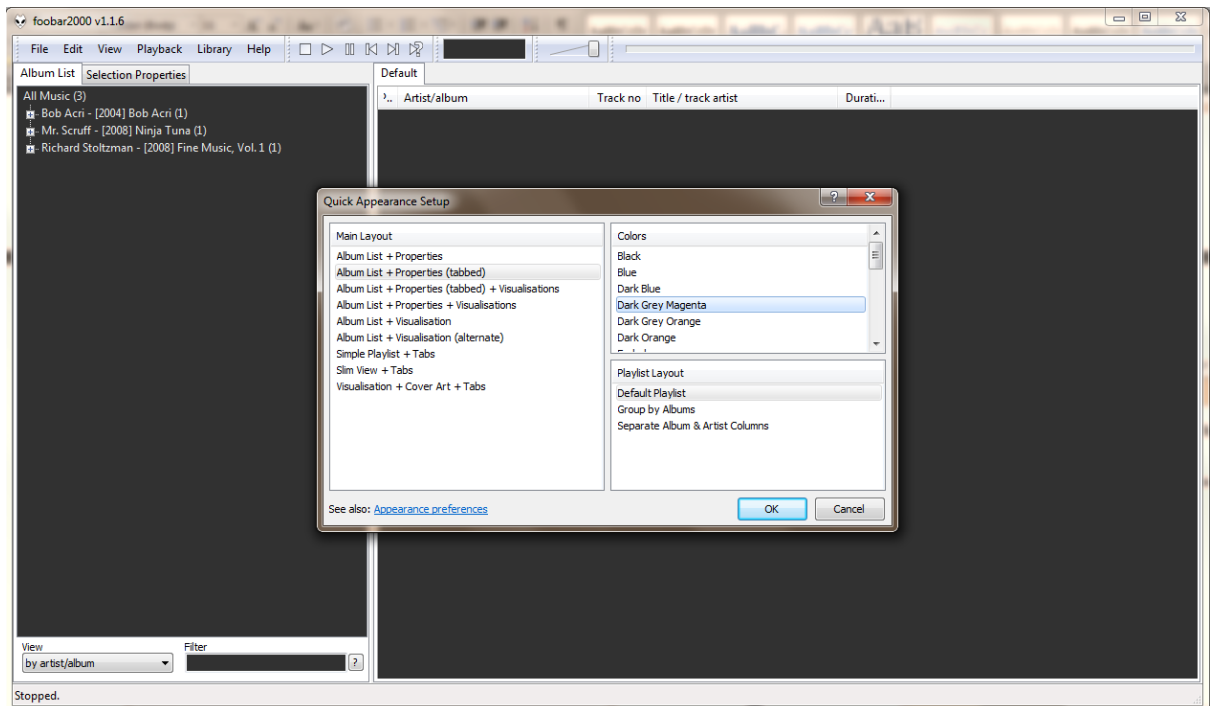


Fig 15

## 5) Setting up ASIO in Foobar

A very important feature to enable within Foobar is ASIO support. The latest version of this component is included on the driver CD. Prior to adding it to Foobar, make sure that the program is closed. Copy the *foo\_out\_asio.dll* file to the “C:\Program Files (x86)\foobar2000\components” folder for 64bit systems or the “C:\Program Files\foobar2000\components” folder for 32bit systems.

Once complete, open Foobar again. Click on ‘File’ menu item and then click on ‘Preferences’ to open the Foobar configuration page.

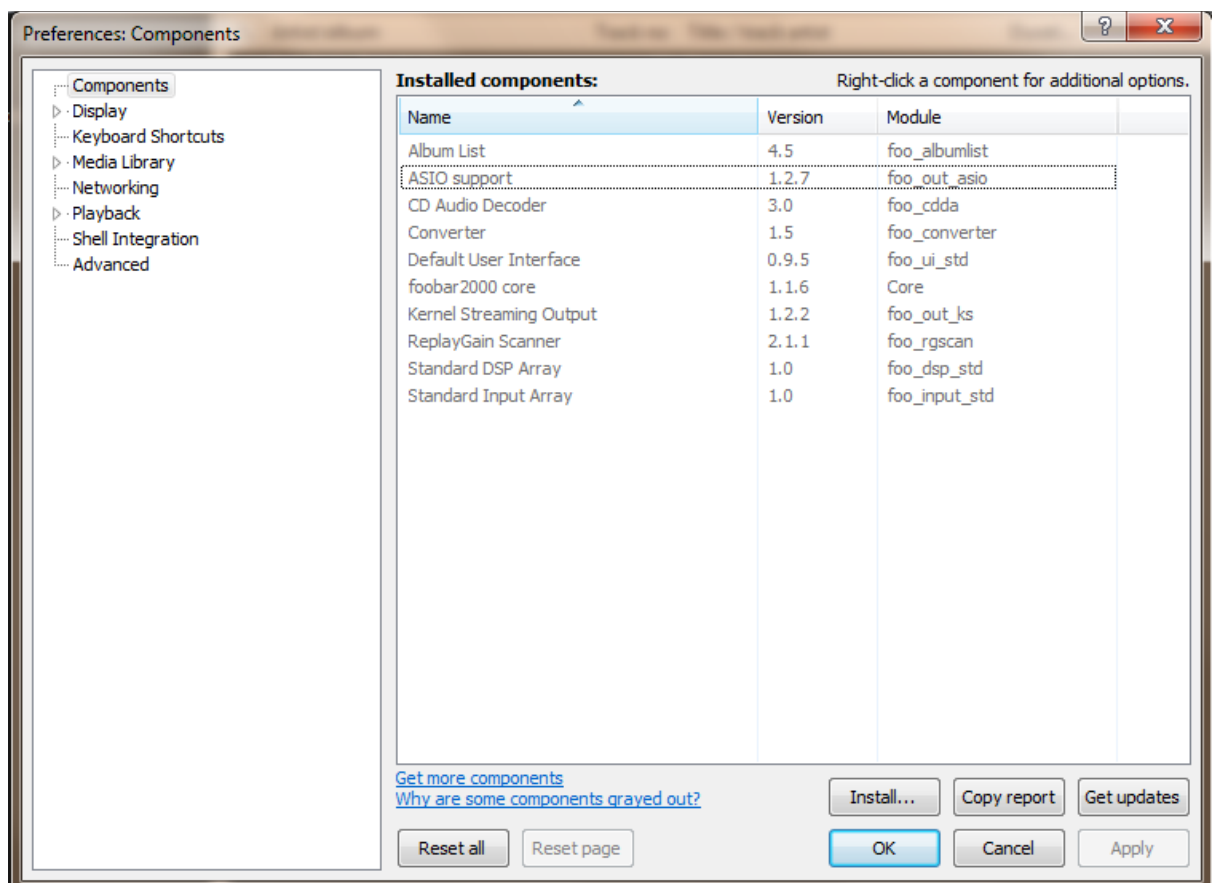
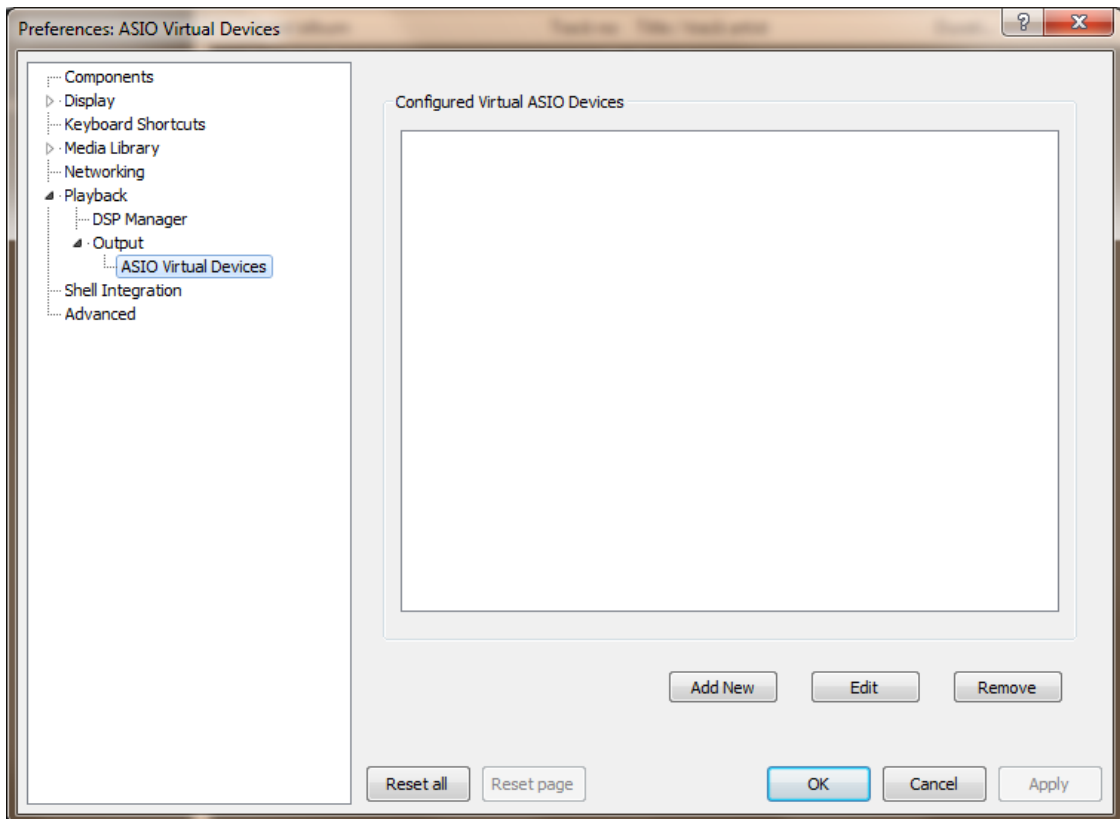


Fig 16

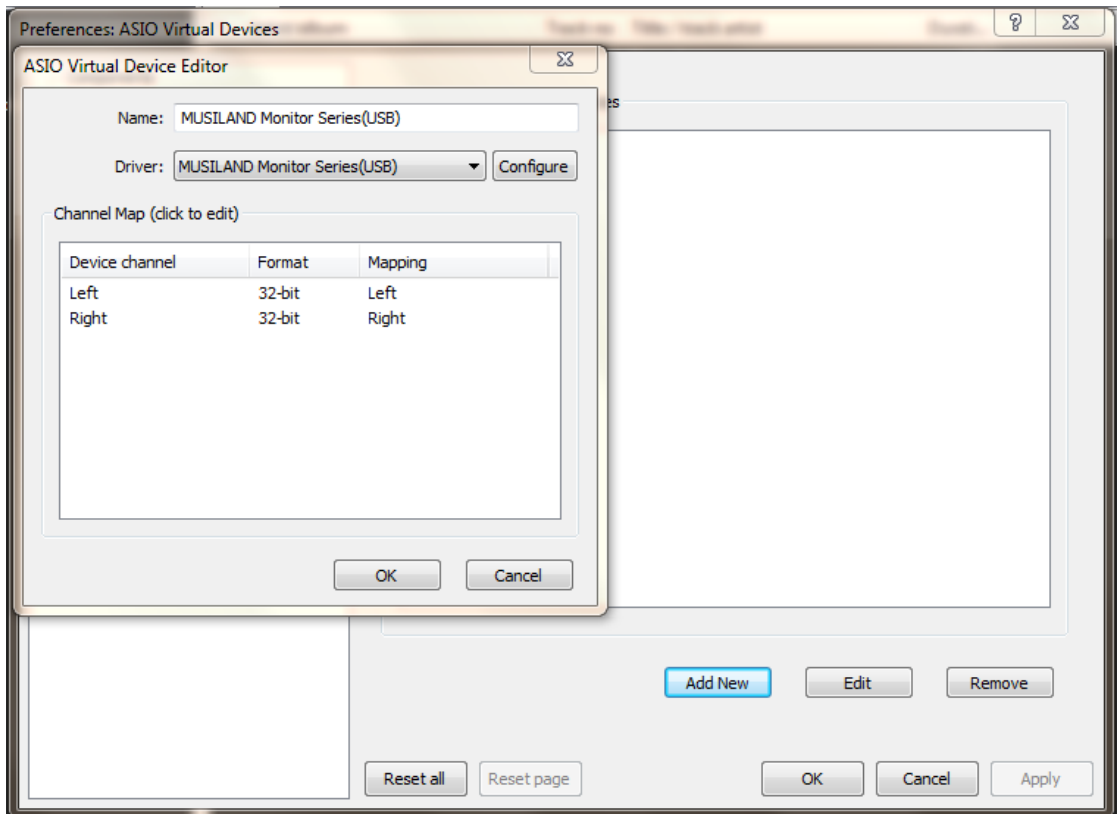
Confirm that the ASIO component is visible on the Component Preferences page.

To enable ASIO playback, expand ‘Playback’, then ‘Output’, then ‘ASIO Virtual Devices’



**Fig 17**

Click on the 'Add New' button and make sure the USB Device is selected and mapped



**Fig 18**

Click on 'OK' to close this screen

Click one branch up on the Playback tree to select the 'Output' screen. Click on the 'Device' drop down box and select the Musiland ASIO option, then click 'Apply' and 'OK' to complete the setup.

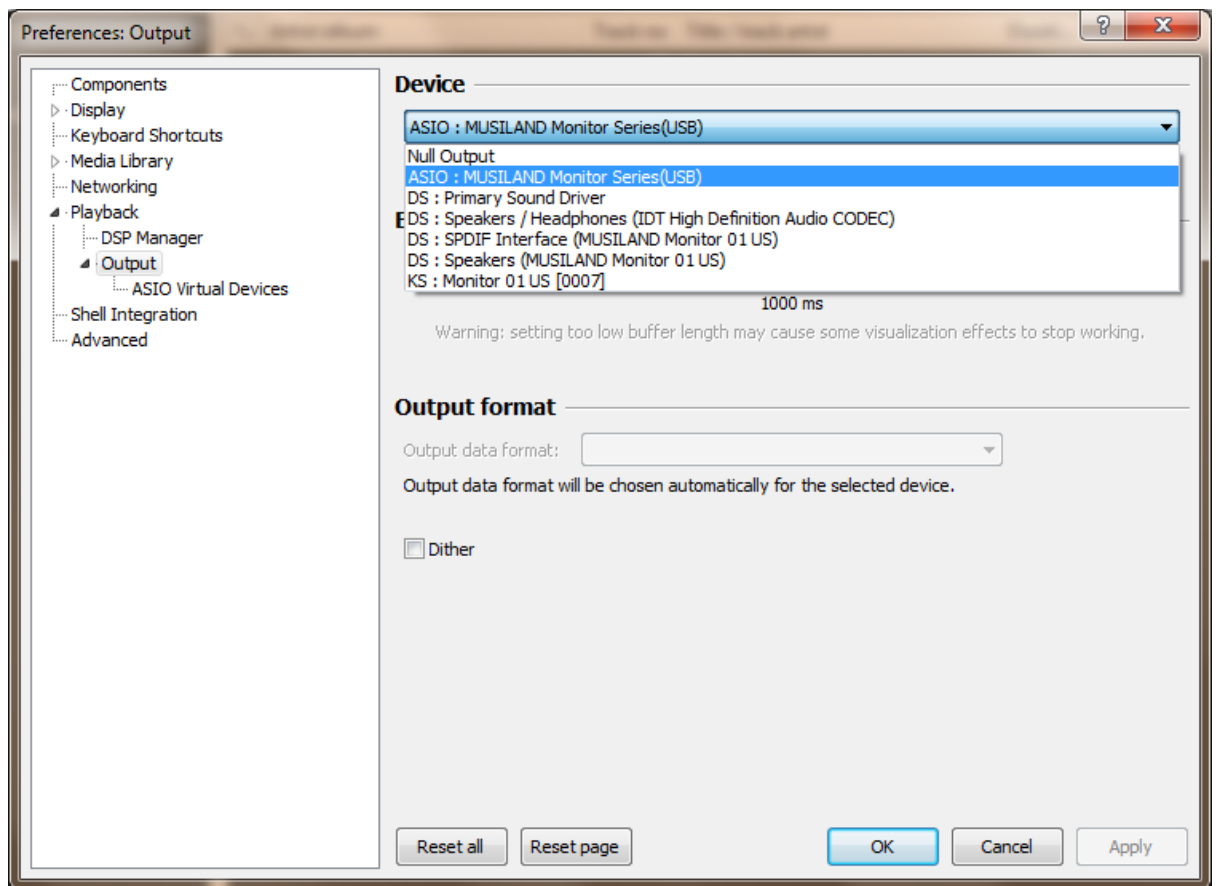


Fig 19

Using these settings, Foobar will always use the Musiland USB device no matter what your default Windows Audio device is. This preserves the integrity of the signal chain, especially for older Operating Systems.